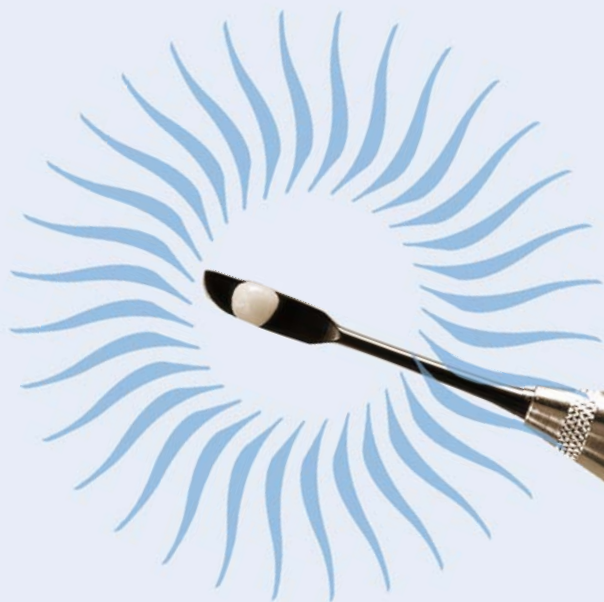


RESTORATIVE



## SATIN STEEL<sup>®</sup> XTS<sup>®</sup>

HIGH PERFORMANCE COMPOSITE INSTRUMENTS

How the best perform



Advanced technology and innovative design have enabled Hu-Friedy to produce a superior instrument:  
**XTS COMPOSITE INSTRUMENTS.**

XTS Instruments allow for exceptional non-stick placement of composite materials without discoloring the restoration.

## FEATURES & BENEFITS

### DISTINCTIVE BLACK FINISH

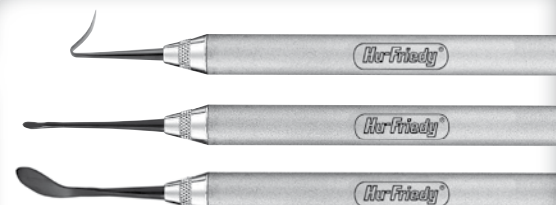
Enhanced contrast between instrument, tooth structure and composite material. The black finish will not flake or discolor the restoration.

### UNIQUE SMOOTH, LARGE, LIGHTWEIGHT HANDLE DESIGN

Easy clean-up, maximum comfort, reduced hand fatigue and an increased level of control.\*

### QUALITY CRAFTSMANSHIP / VARIETY OF DESIGNS

Satin Steel XTS instruments offer unsurpassed performance and an extensive assortment of designs for all composite placement needs.



\*Source: Gerwadowski, L.J., McFall, D.B., Stach, D.: Carpal Tunnel Syndrome; Risk Factors and Preventive Strategies for the Dental Hygienist. Journal of Dental Hygiene, February 1992.

## FREEDMAN

### POSTERIOR COMPOSITE INSTRUMENTS

Instruments specially designed to pre-contour and shape the occlusal surface of the uncured composite.

#### THE DUCKHEAD INSTRUMENT

Duckhead Instrument is used to contour the convexity of the cusp ridge, developing the anatomy in a single motion.

| TNPCCI



#### CONTACT FORMING COMPOSITE INSTRUMENT (SMALL)

Oval-shaped paired instrument designed to provide improved contact forming for small Class II restorations.

| TNFCIS



#### CONTACT FORMING COMPOSITE INSTRUMENT (LARGE)

Oval-shaped paired instrument designed to provide improved contact forming for large Class II restorations.

| TNFCIL



# GOLDSTEIN

## FLEXI-THIN COMPOSITE INSTRUMENTS

The Goldstein Flexi-Thin collection also includes mini designs for small and difficult-to-access preparations.

### #1 GOLDSTEIN FLEXI-THIN

| TNCIGFT1

Small universal style rounded condenser tip and thin, narrow paddle for initial placement and contouring. Application: Class I, II and III restorations.



### #2 GOLDSTEIN FLEXI-THIN

| TNCIGFT2

Larger universal style for final placement and contouring. Application: Class I, II and III restorations.



### #3 GOLDSTEIN FLEXI-THIN

| TNCIGFT3

Flexible, reversed, flared paddle design for shaping and placement. Application: Class III and IV restorations.



### #4 GOLDSTEIN FLEXI-THIN

| TNCIGFT4

Very thin, flexible, paired, offset, paddle-shaped blades for placing and shaping material on posterior, mesial, and distal surfaces. Reverse angle is also useful for placing and shaping anterior bonded restorations.



### #5 GOLDSTEIN FLEXI-THIN

Small reverse angle tips make it easy to place fissures, grooves and pits creating the ideal occlusal anatomy in hard-to-reach posterior areas.

| TNCIGFT5



### #6 GOLDSTEIN FLEXI-THIN

Large reverse angle tips make it easy to place fissures, grooves and pits creating the ideal occlusal anatomy in hard-to-reach posterior areas.

| TNCIGFT6



### MINI #1 GOLDSTEIN FLEXI-THIN

For small pits and fissures, tunnel preps or minor tooth defects on lower anteriors.

| TNCIGFTMI1



AVAILABLE IN  
MICRO MINI | TNCIPCS

### MINI #3 GOLDSTEIN FLEXI-THIN

Flexible, reversed small flared paddle design for shaping and placement in small preparations.

| TNCIGFTMI3



### MINI #4 GOLDSTEIN FLEXI-THIN

Ideal for placing and shaping material in difficult-to-access mesial and distal posterior restorations.

| TNCIGFTMI4



## GOLDFOGEL

### FREEHAND COSMETIC CONTOURING INSTRUMENTS

Nine freehand cosmetic contouring instruments designed specifically for anterior and posterior use.

#### #1 GOLDFOGEL

Angle of tip allows easier access for contouring composite material on larger facial surfaces of central incisors.

| TNCCIA



#### #2 GOLDFOGEL

Straight or angled end can be used for contouring composite material on smaller facial surfaces of central incisors.

| TNCCIB



#### #3 GOLDFOGEL

Flat side of the blade is used for interproximal contouring on central incisors.

| TNCCIC



#### #4 GOLDFOGEL

Used when working near or at interproximal areas. Straight end compacts composite material, while sharp knife edge cuts composite to avoid bonding to adjacent tooth.

| TNCCID



### #5 GOLDFOGEL

Curved blades for thinning and shaping composite material at the gingival areas.

| TNCCIE



### #6 GOLDFOGEL

Curved blades for adding and shaping composite material on desired areas of facial incisors.

| TNCCIF



### #7 GOLDFOGEL

Allows formation of marginal ridges along with buccal and lingual embrasures while composite is uncured.

| TNCCIG



### #8 GOLDFOGEL

Designed to help attain proper occlusal form, function and improve marginal seal.

| TNCCIH



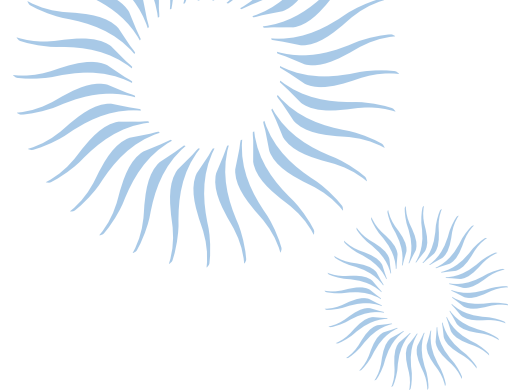
### #9 GOLDFOGEL

Aids in forming a properly filled axial box and occlusal portion.

| TNCCII



## BOGHOSIAN / LADMORE



### #1 BOGHOSIAN

| TNPFIAB1

A combination of thin, knife-shaped blade with standard angled blade. Knife blade allows controlled, efficient manipulation of composite, even in gingival areas. Application: Class III, IV and V restorations.



### #2 BOGHOSIAN

| TNPFIAB2

Used for measuring composite layers and shaping occlusal anatomy.



### LADMORE #2

| TNBBL2

Medium and large rounded tips for condensing composite materials.



### LADMORE #3

| TNBBL3

Small and medium slightly rounded tips for condensing composite materials.



## GENERAL

Hu-Friedy's XTS instruments provide high-quality options for every step of a restorative procedure. The general XTS instruments include carvers, filling instruments, contouring instruments, pluggers, burnishers and more.

### #21B DE BURNISHER

| TNBB21B

Acorn shaped instrument for carving occlusal anatomy in posterior restorations.



### #27/29 DE BURNISHER

| TNBB27/29

Used to blend material to margin for final contouring, to achieve sculpting of areas like grooves, fissures or pits and to carve occlusal anatomy.



### SMALL/MEDIUM BALL BURNISHER

| TNBBS/M

Shape conforms to rounded corners or junctions of cavity surfaces to condense and shape composite against the cavity wall.



### SMALL/MEDIUM CONTACT FORMING

| TNCFIS/M

Oval-shaped paired instrument designed to provide improved contact forming for small/medium Class II restorations.



### MEDIUM/LARGE CONTACT FORMING

| TNCFIM/L

Oval-shaped paired instrument designed to provide improved contact forming for medium/large Class II restorations.



## GENERAL

### CONTOURING INSTRUMENT

| TNCFIR/L

Used for shaping of inclines, planes or developmental lobes for anterior and posterior restorations. The different angles of curvature on each end provide a buccal and lingual orientation for posterior shaping or a facial and lingual orientation for anterior shaping.



### INTERPROXIMAL CARVER

| TNCVIPC

Extremely thin, flexible blades opposed for easy handling of composite materials and interproximal contouring. Application: Class I, II, IV and V restorations.



### MEDIUM PLACING/ CONDENSING

| TNCIPCM

For small pits and fissures, as well as placement and condensing with limited access.



### LONG INTERPROXIMAL CARVER

| TNCVIPCL

Used for placement of the composite increments against the cavity wall or adjacent tooth surface.



### LARGE PLACING/ CONDENSING

| TNCIPCL

For final placement in Class I and II restorations. The larger, round ball end is used for condensing and shaping in Class I and II restorations and on lingual surfaces of anterior teeth.



### #8A DE

| TNPFI8A

Used for gingival retraction, as well as to place and sculpt facial aspects.





#### #A6 DE

| TNPFA6

Large, thin blades are opposed for adaptability to any situation, including veneers where broad contouring or carving strokes are needed. Application: Class II, III, IV and V restorations.



#### OT TANNER

| TNPLGOT

Rhomboid-shaped plugger for use with condensable composite material in posterior restorations.



#### #4/5 GREGG DE

| TNPFIG4/5

Off-angled blades allow easy adaptability to mesial and distal surfaces of posterior teeth, providing increased interproximal access and better visibility of the working area. Application: Class II and V restorations.



#### #5A SMALL, ROUND

| TNPLG5A

#5A Small, round, inverted cone plugger for use with condensable composite material in posterior restorations.



#### #W3 DE PLASTIC FILLING INSTRUMENT

| TNPFIW3

Combination of medium-sized blade with small condenser tip for universal adaptability. Ideal for placement, layering and general contouring. Application: Class I, II, III, IV and V restorations.



#### #3 HOLLENBACK RECTANGULAR

| TNPLGH3

Rectangular-shaped plugger for use with condensable composite material in posterior restorations.



## MICRO MINI #1 GOLDSTEIN FLEXI-THIN

Micro-Mini for extremely small pits and fissures.

| TNCIPCS



## KIT LISTS

### ANTERIOR KIT

| TNANTKIT

Five specially designed Anterior Satin Steel XTS Composite Instruments to be used for placing, condensing, and carving composite materials.

#3 Goldstein Flexi-Thin	TNCIGFT3
Micro Mini #1 Goldstein Flexi-Thin	TNCIPCS
Medium Placing/Condensing	TNCIPCM
Large Placing/Condensing	TNCIPCL
Mini #1 Goldstein Flexi-Thin	TNCIGFTM1

### POSTERIOR KIT

| TNPOSKIT

Five Posterior Satin Steel XTS Composite Instruments specially designed for Class I & II restorations.

OT Tanner	TNPLGOT
#3 Hollenback Rectangular	TNPLGH3
#5A Small, Round	TNPLG5A
Small/Medium Contact Forming	TNCFIS/M
Medium/Large Contact Forming	TNCFIM/L

For more information about  
Hu-Friedy's Total Solutions visit

**hu-friedy.eu**

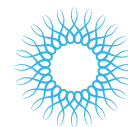
#### PERIODONTAL



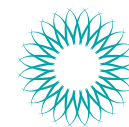
#### RESTORATIVE



#### ORTHODONTIC



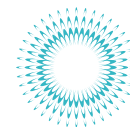
#### INSTRUMENT MANAGEMENT



#### ENDODONTIC



#### SURGICAL



#### ULTRASONIC SCALING



**Manufacturer:** Hu-Friedy Mfg. Co., LLC | 3232 N. Rockwell Street | Chicago, IL 60618 | USA  
**Customer Care Department:** Hu-Friedy Mfg. B.V. | P.O. Box 29025 | NL-3001 GA Rotterdam | Netherlands  
**Free Phone** 00800 48 37 43 39 | **Free Fax** 00800 48 37 43 40 | **Website:** Hu-Friedy.eu