



# HU-FRIEDY KEY OPINION LEADER

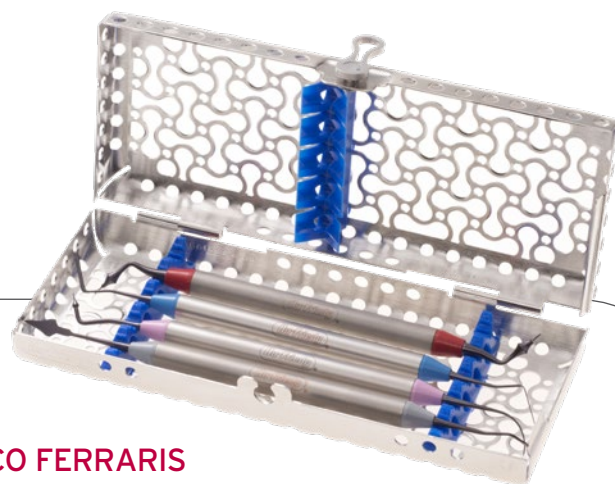
**DR. FEDERICO FERRARIS**

FEDERICO FERRARIS ADHESSTHETICS THECA KIT BY HU-FRIEDY



Born on 10<sup>th</sup> of August 1974 in Alessandria, Italy. Graduated in Dental School at Genoa University as DDS in 1999. ADHESSTHETICS founder. International speaker at dental congresses and courses in more than forty Countries. Active Member of the following Academies: EAED (European Academy of Esthetic Dentistry), AIC (Italian Academy of Conservative), IAED (Italian Academy of Esthetic Dentistry) and SCAD (Society for Color and Appearance in Dentistry). Member of AARD (American Academy of Restorative Dentistry) and IAAD (International Academy for Adhesive Dentistry). He is President Elect of SCAD for the biennium 2021-2022 and of AIC for the biennium 2022-2023 DSD (Digital Smile Design) Master since 2013. Member of the Editorial Board of IJED (International Journal of Esthetic Dentistry) since 2010. Co-author of several Italian and International scientific publications. Dental practice in Alessandria, focusing in Operative Dentistry and Prosthodontics.

[www.federicoferraris.com](http://www.federicoferraris.com)\*



## FEDERICO FERRARIS ADHESSTHETICS THECA KIT BY HU-FRIEDY

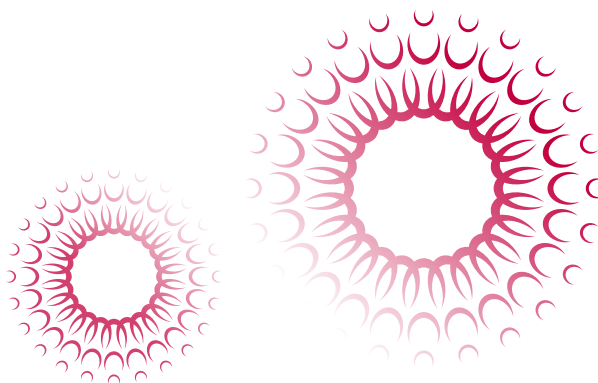
The **Adhesthetic Theca kit** is comprised of four unique instruments designed by Dr. Federico Ferraris in collaboration with Hu-Friedy. It is an independent set of instruments conceived to cover the main variety of clinical phases in direct and indirect restorative dentistry in order to help clinicians to achieve predictable results and clinical excellence.

The Main Shaper, the Fine Shaper, the 3D Shaper and the Direct Caliper are all made with **XTS technology**, a dark **Aluminum Titanium Nitride (AlTiN)** coating that offers superb contrast in comparison to composite materials and tooth structure. The coating is also incredibly slick, resisting the adhesion of sticky composite materials. The smooth handle is not only ergonomic and lightweight, but each instrument has its own distinct set of colour cones, making instrument identification simple. The set of four instruments includes an IMS Cassette, which prevents the instruments from being damaged during transportation and sterilization protocols.

“Incorporating these techniques into everyday procedures allows for predictable results in direct and indirect restorative dentistry. Constantly challenging yourself and continuously making personal improvements is the personal motto of Federico Ferraris.”

**Do Better Than Yesterday**

– DR. FEDERICO FERRARIS



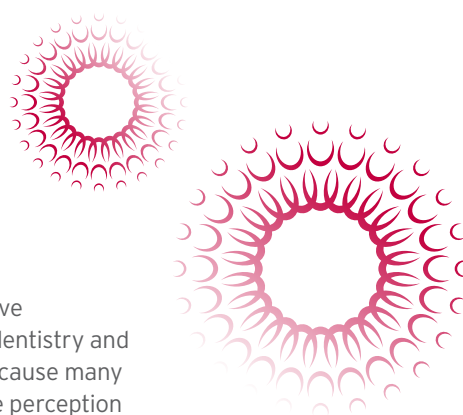
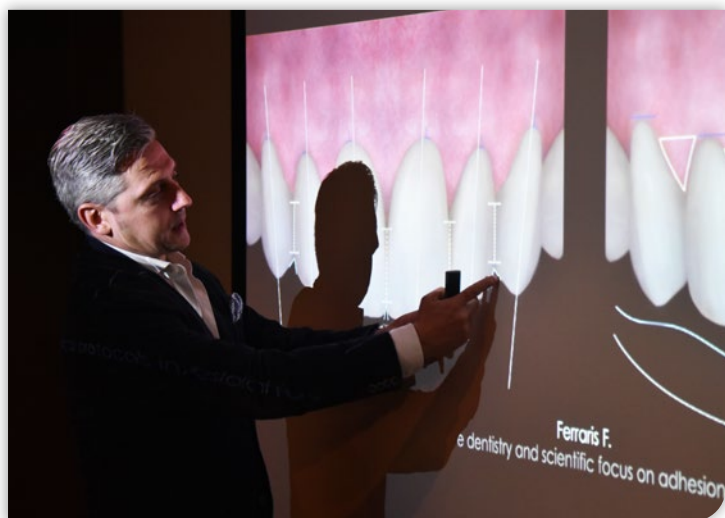
Visit us online at [www.hu-friedy.eu](http://www.hu-friedy.eu)

©2019 Hu-Friedy Mfg. Co., LLC. All rights reserved.  
\* Adhesthetic is not owned by or affiliated with Hu-Friedy

How the best perform

**Hu-Friedy**

# FEDERICO FERRARIS ADHESSTHETICS THECA KIT BY HU-FRIEDY



## WHAT IS ADHESSTHETICS?

Esthetic results are one of the most critical elements which make up restorative dentistry. Now more than ever, patients are requesting esthetic outcomes in dentistry and it is a due result. Not being able to offer esthetic treatments from dentist can cause many serious problems in the satisfaction of the patient, in his own image and in the perception of the dental clinic that he represents.

In the past few decades, one of the biggest transformations in restorative dentistry has been the ever-evolving adhesive material. As these are constantly being improved upon, so must the instruments which we interface these with.

**Adhessthetics** is the fusion of Adhesion and Esthetics and represents the process by which protocols are codified during the different phases of the treatment. This philosophy gives successful protocols to those clinicians who want to achieve excellence in Restorative Dentistry.

TNFF 1/2

TNFF 3/4

TNFF 5/6

TNFF 7/8





# FEDERICO FERRARIS ADHESSTHETICS THECA KIT BY HU-FRIEDY

## HOW TO DO?

### TNFF1/2 - FERRARIS MAIN SHAPER



#### FF1

Indications: Manipulation of composite on vestibular surfaces during direct anterior restorations, Class IV and V cases, direct veneers restorations and general esthetic restorations. The tip's lance shape and flexibility allow for it to adapt to restorative material (*Fig. 6*) and is also effective in removing excess material from the buccal region by using its edge (*Fig. 7*).

Its flexibility allows for restorative materials to be manipulated with a delicate touch. It is sturdier than a standard brush however less rigid than a standard spatula.

#### FF2

Indications: Application of medium-great quantity of material directly on the tooth or as a material carrier. Its round shape and rigidity allow for the manipulation of restorative materials in wide cavities. It is also effective when placing material on wide surfaces (*Fig. 8*).

Dimensions of working part:  
length 11,5 mm; width 2,5 mm and  
thickness 0,4 mm.

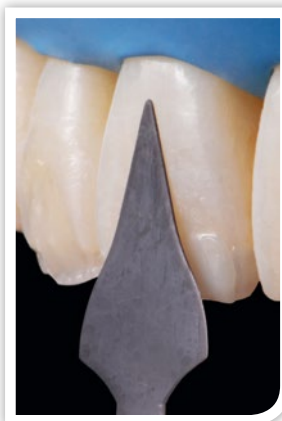


Fig. 6

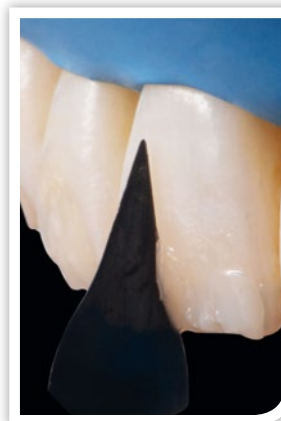


Fig. 7

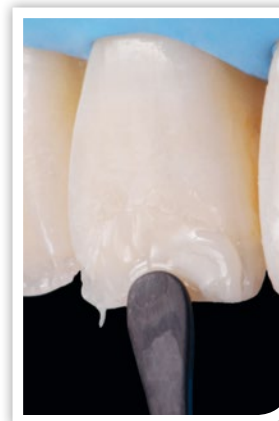


Fig. 8

### TNFF3/4 FERRARIS FINE SHAPER / CORD PACKER



#### FF3 & FF4

Indications: Modelling of restorative materials on anterior and posterior teeth as well as the placement of retraction cord.

A distinctive characteristic of this spatula (FF3 straight and FF4 angled) is its flexibility. Its thin design allows for precise modelling (*Fig. 9, 10, 11, 12*). It is particularly useful for deep cavities. It is also helpful during procedures where high magnification is used because its length allows for easier access to these deep regions while not interfering with the clinician's field of vision (*Fig. 13*). Retraction cord can be placed precisely with the thin instrument tip (*Fig. 14*).



Fig. 9

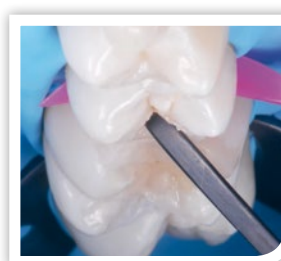


Fig. 10

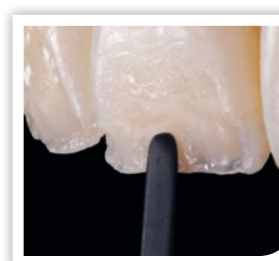


Fig. 11

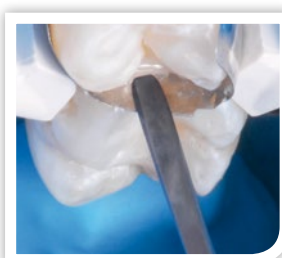


Fig. 12

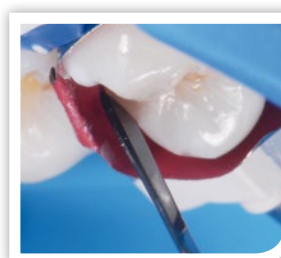


Fig. 13



Fig. 14





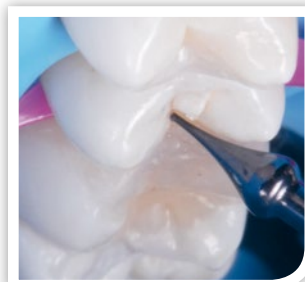
## FEDERICO FERRARIS ADHESSTHETICS THECA KIT BY HU-FRIEDY HOW TO DO?

### TNFF5/6 FERRARIS 3D SHAPER

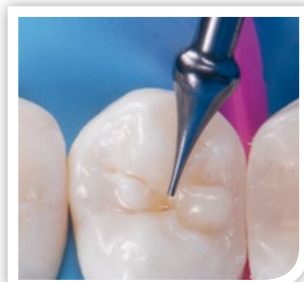


#### FF5

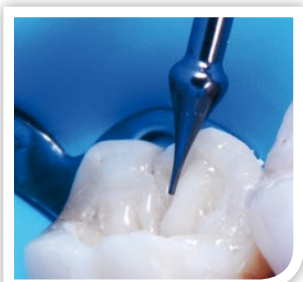
Indication: anatomical modelling of restorations of posterior cusps (*Fig. 15, 16, 17*) or of anatomical dentinal or superficial elements on anterior teeth (*Fig. 18*). The unique teardrop shape of this point makes it excellent for sculpting materials in both posterior and anterior cases.



*Fig. 15*



*Fig. 16*



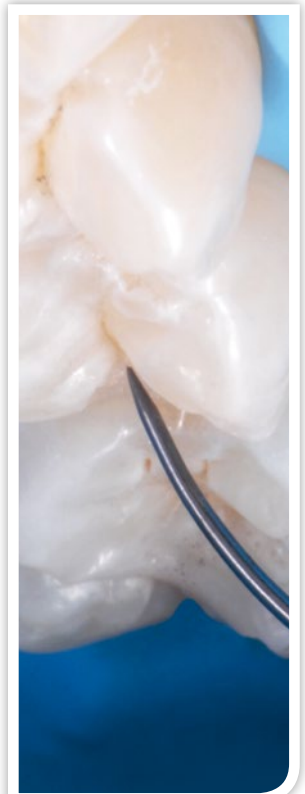
*Fig. 17*



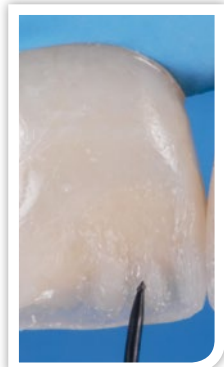
*Fig. 18*

#### FF6

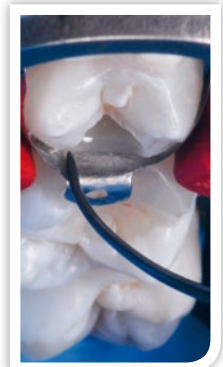
Indications: Sculpting thin sulcus as well as finishing of the margins and thin modellings on posterior and anterior direct restorations (*Fig. 19, 20, 21, 22*). Application of fluid material in deep cavities (*Fig. 23*), positioning of flowable materials in occlusal sulcus (*Fig. 24*), coating low viscosity materials (*Fig. 25*), removal of excesses of high viscosity cementation material (*Fig. 26*) and control of margins after cementation (*Fig. 27*). Its distinctive curved shape allows the tip to easily reach areas in both the anterior and posterior arch. Fine details can be created in restorative materials due to the tip's thin design.



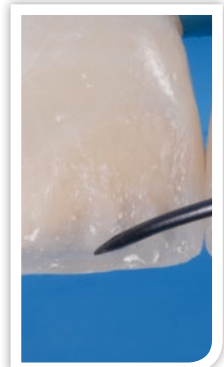
*Fig. 19*



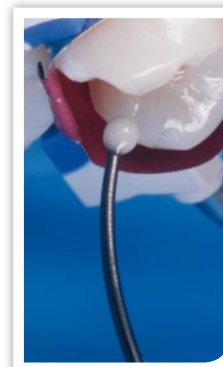
*Fig. 20*



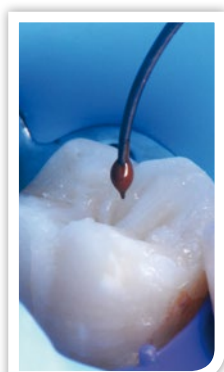
*Fig. 21*



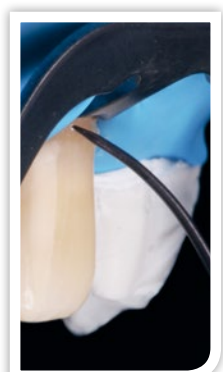
*Fig. 22*



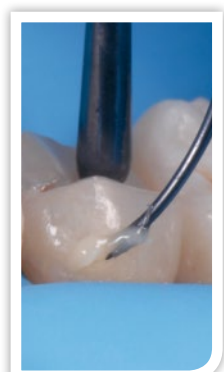
*Fig. 23*



*Fig. 24*



*Fig. 25*



*Fig. 26*



*Fig. 27*



## FEDERICO FERRARIS ADHESSTHETICS THECA KIT BY HU-FRIEDY HOW TO DO?

### TNFF7/8 FERRARIS DIRECT CALIPER



#### FF7 & FF8

Indications: Measuring thickness of enamel margin in direct restorations on anterior teeth (*Fig. 28*), measuring thicknesses of direct and indirect restorations during various clinical phases (*Fig. 29*), creating definition of dentinal curving (*Fig. 30*). This instrument is a restorative probe with a flat head (not rounded, as most periodontal probes) with grooves at 0,5 mm increments. The tip is angled at 45° which when aligned against the preparation bevel, allows for the thickness of dentinal material and residual buccal enamel to be determined.

The FF7 measures an enamel thickness of 0,5 mm (the universal thickness in the third medium of the crown), while the FF8 measures a thickness of 0,9 mm (which is preferred in incisal areas, or times when the thickness of the natural enamel is of critical importance). The shape of the dentin in the incisal direction in addition to the thickness to the margin can be determined with this instrument.



Fig. 28



Fig. 29



Fig. 30

#### FEATURES OF THE XTS TECHNOLOGY:

A dark Aluminum Titanium Nitride (AlTiN) coating provides a smooth, hard surface which holds a sharp cutting edge. The dark coating, XTS®, also enhances visibility by providing high contrast and also reduces light reflection from operator and microscope lights.



# FEDERICO FERRARIS ADHESSTHETICS THECA KIT BY HU-FRIEDY



## TNFF 1/2

**FF1:** Manipulation of composite on buccal surfaces during direct anterior restorations, Class IV and V cases, direct veneers restorations and general esthetic restorations.

**FF2:** Application of medium-great quantity of material directly on the tooth or as a material carrier.



## TNFF 3/4

Modelling of restorative materials on anterior and posterior teeth as well as the placement of retraction cord.



## TNFF 5/6

**FF5:** For anatomical modelling of restorations of posterior cusps or of anatomical dentinal or superficial elements on anterior teeth.

**FF6:** Its distinctive curved shape allows the tip to easily reach areas in both the anterior and posterior arch. Fine details can be created in restorative materials due to the tip's thin design.



## TNFF 7/8

Measuring thickness of enamel margin in direct restorations on anterior teeth, measuring thicknesses of direct and indirect restorations during various clinical phases, creating definition of dentinal curving.

## ADHESSTHETICS THECA KIT

### PARTCODE THE KIT INCLUDES:

#### TNFFDIN

- IMS Infinity Cassette 1/4 DIN, IME14DIN58, blue
- 4 Ferraris instruments

### PARTCODE DESCRIPTION

#### TNFF1/2

Ferraris Main Shaper

#### TNFF3/4

Ferraris Fine Shaper/Cord-packer

#### TNFF5/6

Ferraris 3D Shaper

#### TNFF7/8

Ferraris Direct Caliper

## IMS: WHY USING A IMS INFINITY CASSETTE SYSTEM?

By standardising your instruments with IMS, additional time and revenue is generated while extending the useful life of your Hu-Friedy instruments. Dental professionals state that by implementing IMS, they save 5 to 10 minutes per procedure allowing the staff to spend more time on value-added activities.

In addition, safer transportation of soiled instruments reduces risk of injury and exposure to blood borne pathogens.

