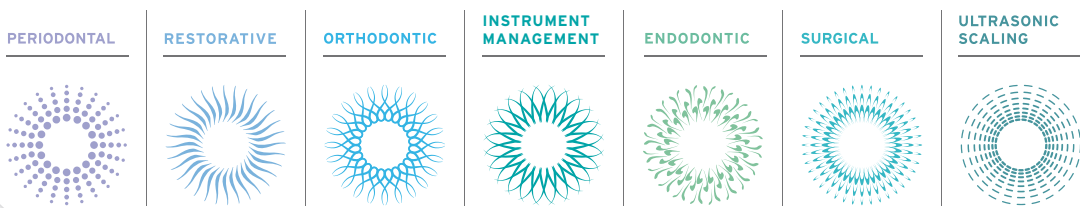




How the best perform



For more information about
Hu-Friedy's Total Solutions visit
HU-FRIEDY.EU



RUBBER DAM CLAMPS

REDUCE GLARE WITH SATIN STEEL®



48 WAYS TO INCREASE VISIBILITY

FACT

Today's dental lighting is brighter and more intense than ever before. Yet most rubber dam clamps reduce visibility by reflecting this light back into your eyes, creating a blinding glare.

CHALLENGE

Finding a rubber dam clamp that increases visibility and is available in a wide range of sizes and applications is often challenging.

SOLUTION

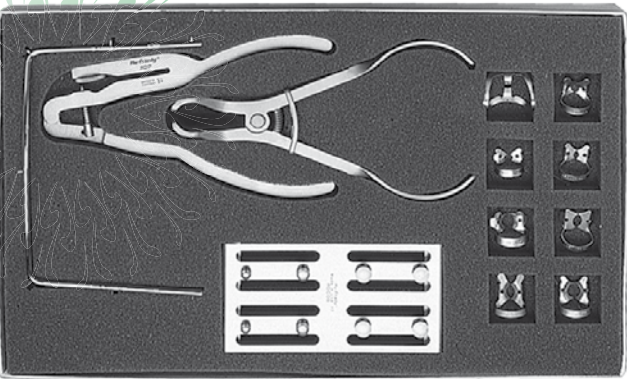
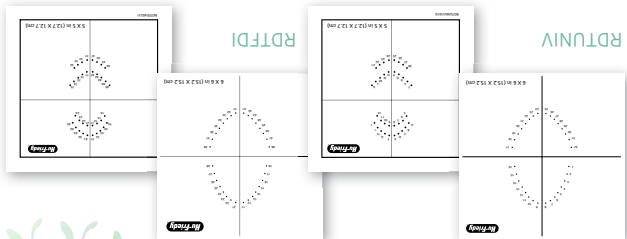
Hu-Friedy's Satin Steel Rubber Dam Clamps offset bright clinical lighting. Hand-crafted to absorb and dissipate light instead of reflecting it back, these matte-finish rubber dam clamps are available in 48 sizes to help you perform at your best. The result is clear, with Hu-Friedy's Satin Steel, you can experience a comfortable field of vision that's easier on the eyes.



SATIN STEEL RUBBER DAM CLAMP
REFERENCE POSTER INSIDE.

DESCRIPTION		PART CODE
Rubber Dam Clamp Forceps	RDF	
Rubber Dam Punch	RDP	
Rubber Dam Frame-Adult	RDAF6	
Universal Rubber Dam Template	RDTUNIV	
FDI Rubber Dam Template	RDTFDI	
Rubber Dam Clamp Organizing Board	RDCOB	
#0 Satin Steel Rubber Dam Clamp	RDCM0	
#1 Satin Steel Rubber Dam Clamp	RDCM1	
#2 Satin Steel Rubber Dam Clamp	RDCM2	
#7 Satin Steel Rubber Dam Clamp	RDCM7	
#8 Satin Steel Rubber Dam Clamp	RDCM8	
#8A Satin Steel Rubber Dam Clamp	RDCM8A	
#14A Satin Steel Rubber Dam Clamp	RDCM14A	
#212 Satin Steel Rubber Dam Clamp	RDCM212	

RUBBER DAM KIT (RDKIT)
Basic items needed for rubber dam procedures conveniently packaged in a kit (also available individually).



KITS AND SETS

CROSS REFERENCE CHART

HU-FRIEDY PART CODE	COMPETITIVE CLAMP NUMBER	HU-FRIEDY PART CODE	COMPETITIVE CLAMP NUMBER	HU-FRIEDY PART CODE	COMPETITIVE CLAMP NUMBER
RDCM0	0	RDCMW7	W7	RDCM25	
RDCM00	00	RDCM8	8	RDCM26	26
RDCM1	1	RDCM8A	8A	RDCM26N	26N
RDCM1A	1A	RDCMW8A	W8A	RDCM27	27
RDCM2	2	RDCM8AD		RDCM27N	27N
RDCMW2	W2	RDCM9	9	RDCM28	28N
RDCM2A	2A	RDCM9S	9T	RDCM29	
RDCM2AS	2AT	RDCM10	10	RDCM30	
RDCM3	3	RDCM11	11	RDCM31	
RDCMW3	W3	RDCM12A	12A	RDCM56	56
RDCM4	4	RDCM13A	13A	RDCM56S	56T
RDCMW4	W4	RDCM14	14	RDCM201	
RDCM5	5	RDCM14A	14A	RDCM205	
RDCM6	6	RDCMW14A	W14A	RDCM209	209
RDCM7	7	RDCM18		RDCM212	212
RDCM7A	7A	RDCM24		RDCM212SA	212SA

RUBBER DAM CLAMP SET (RDCSET7)

A popular set for basic coverage. Other clamp sets also available.

DESCRIPTION

PART CODE

#00 Satin Steel Rubber Dam Clamp RDCM00

#2 Satin Steel Rubber Dam Clamp RDCM2

#7 Satin Steel Rubber Dam Clamp RDCM7

#8 Satin Steel Rubber Dam Clamp RDCM8

#8A Satin Steel Rubber Dam Clamp RDCM8A

#9 Satin Steel Rubber Dam Clamp RDCM9

#14A Satin Steel Rubber Dam Clamp RDCM14A

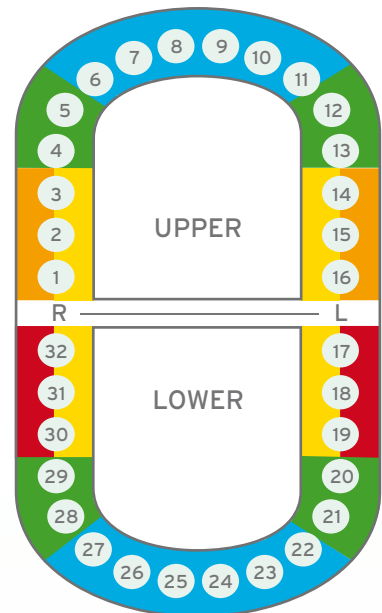
SATIN STEEL RUBBER DAM CLAMPS

A complete line for anterior, premolar and molar applications

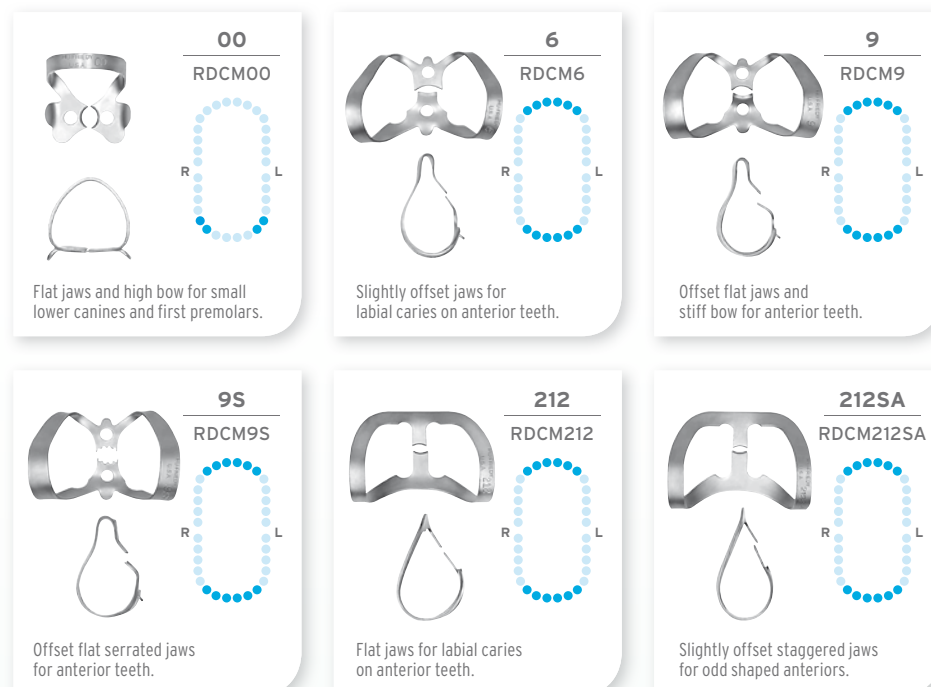
ENDODONTIC

How the best perform

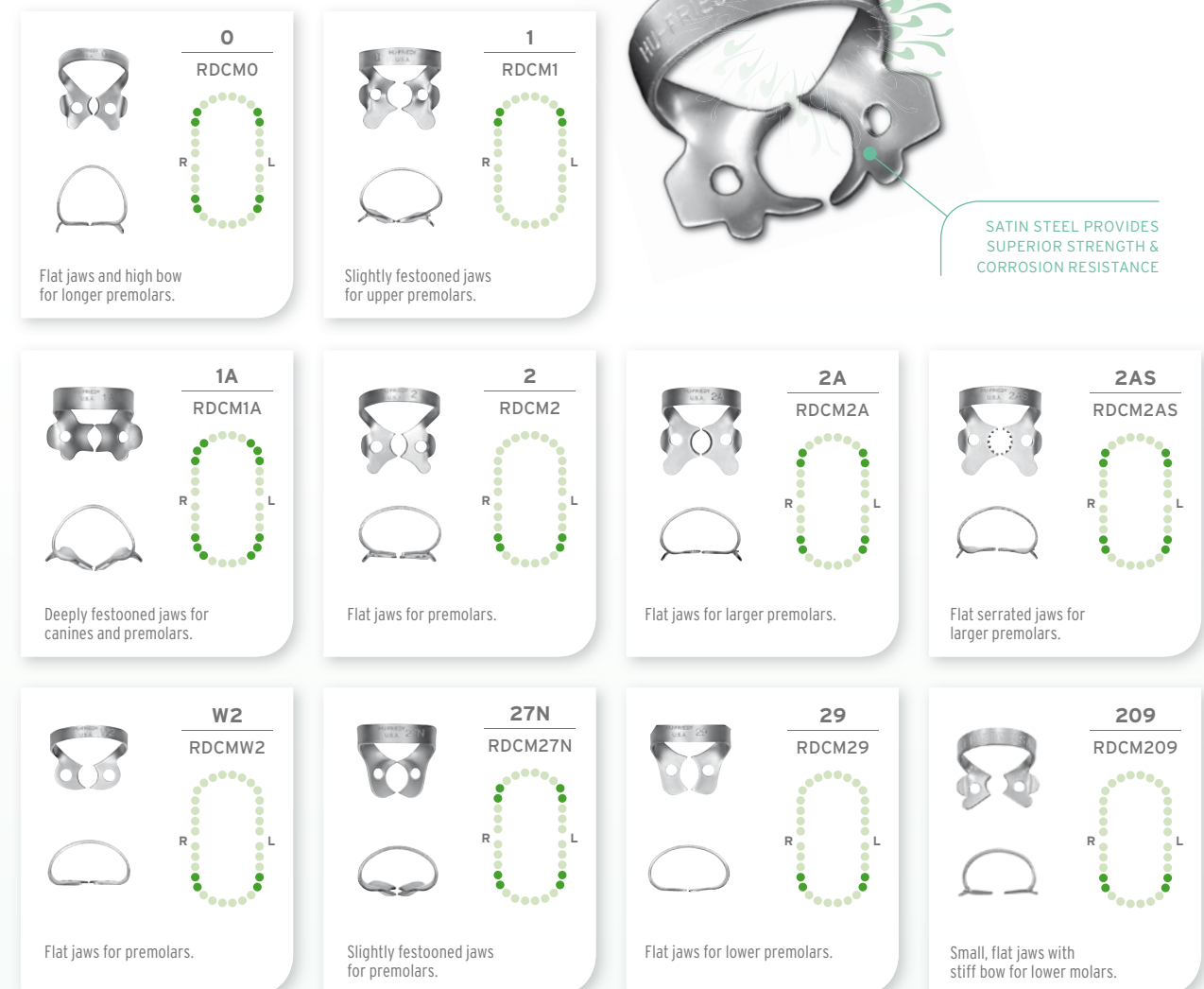
Hu-Friedy



ANTERIOR RUBBER DAM CLAMPS



PREMOLAR RUBBER DAM CLAMPS



SATIN STEEL PROVIDES SUPERIOR STRENGTH & CORROSION RESISTANCE

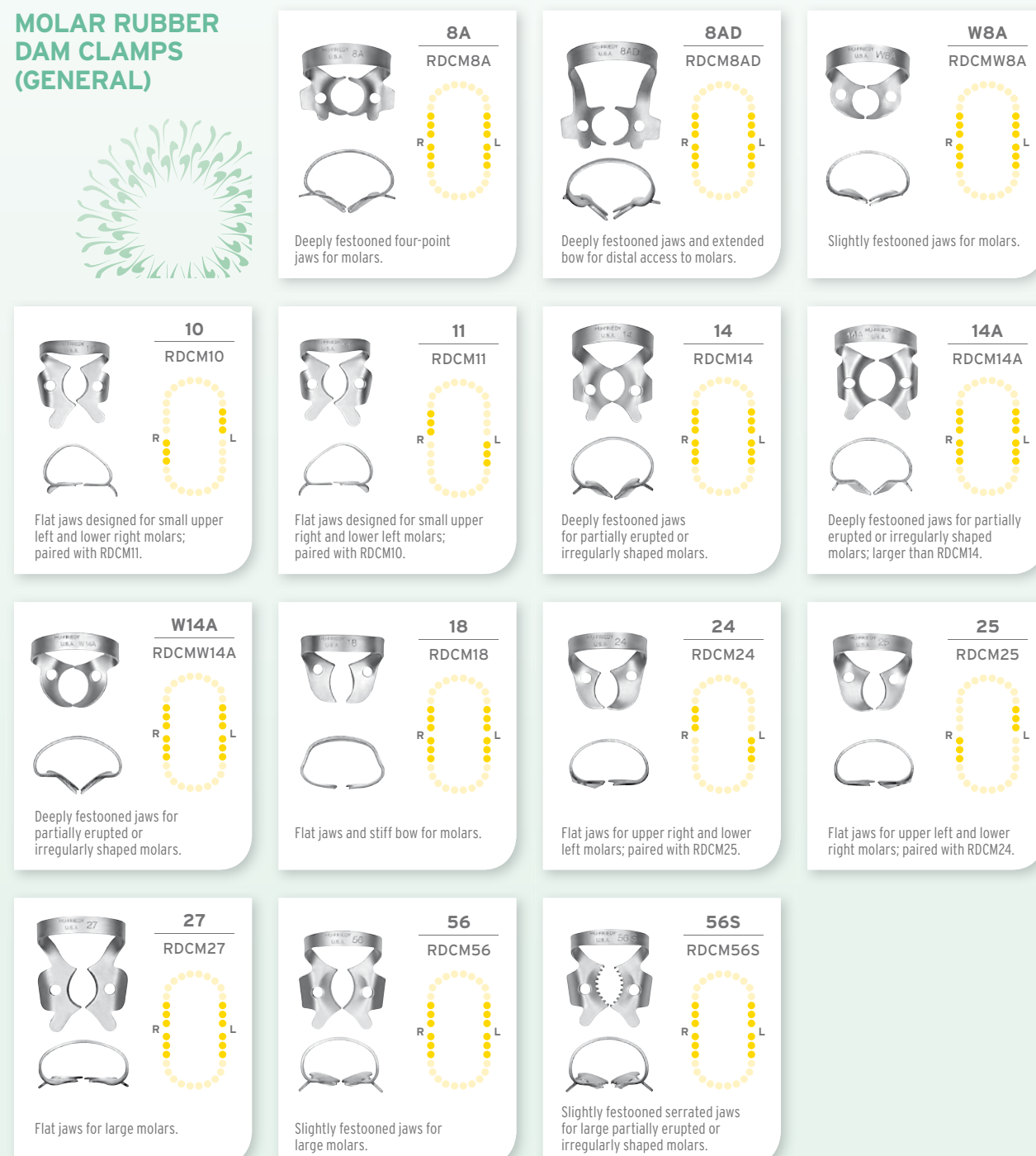
ACCESSORIES

Hu-Friedy also has a full range of accessories useful for rubber dam clamp applications including forceps, punches, frames, templates, and an organizing board (shown on right).

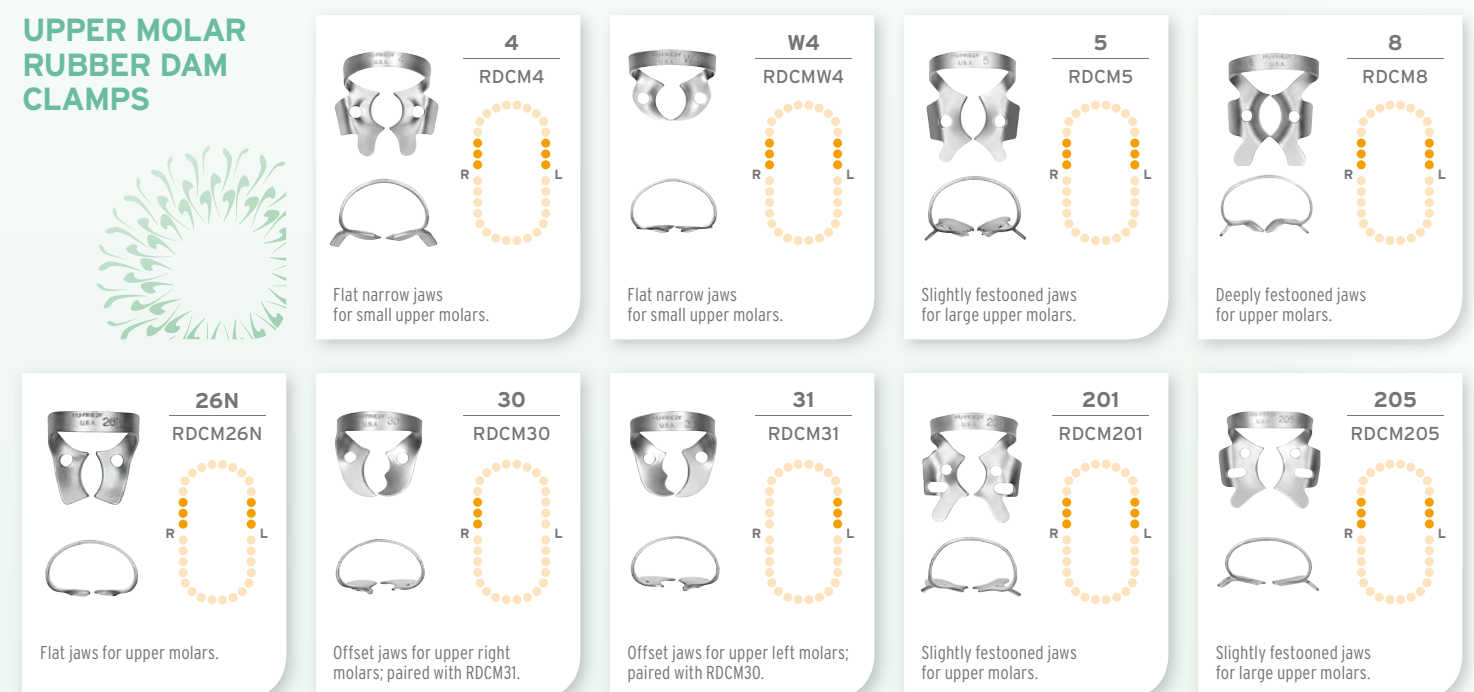


EIGHT PEGS SECURELY HOLD VARIOUS SIZED CLAMPS

MOLAR RUBBER DAM CLAMPS (GENERAL)



UPPER MOLAR RUBBER DAM CLAMPS



LOWER MOLAR RUBBER DAM CLAMPS

